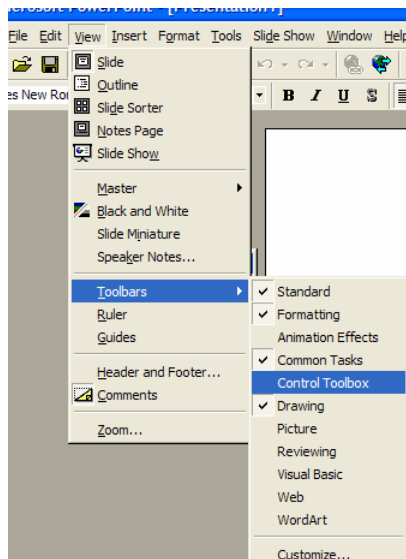


Inserting flash into power point

Flash animation – as found in NLN materials – can be placed into PowerPoint presentations to add interactivity and sophisticated animations to your learning material.

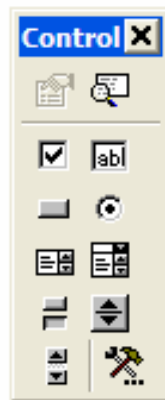
Step 1

Copy/Move the flash animation into a new folder, to be saved with your presentation



Step 2

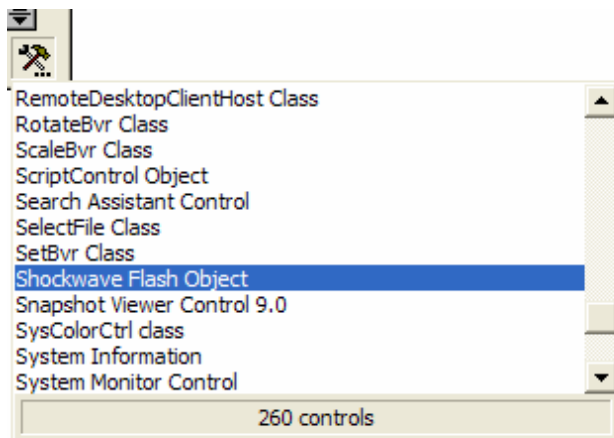
Open the control tool box with in the PowerPoint presentation **View>Toolbars>Control Toolbox**



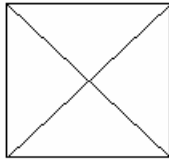
The Control toolbox panel will appear

Step 3

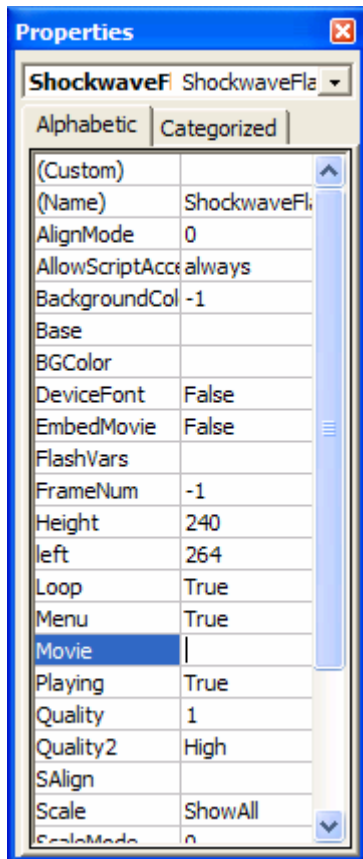
Select the 'more controls' button (bottom right button). A drop down list will appear. Scroll to **Shockwave Flash Objects** and double click on this option



Return to the presentation, the movie will have changed to a cross hair '+' click and drag where you like the flash animation to appear. Once drawn a box with an X in it will appear, flash animation which is where the flash animation will play. It can be resized and moved on screen.



Click on the box to select it and then click on the properties button from the **Control Toolbox** (Top Left)



This box appears Scroll to the "Movie" property

On the right is an input area-this is where you enter the location of the flash file.

You have followed step1, enter the file name

If the both the flash and PowerPoint files have been saved to the same location – enter the flash file name followed by .swf ie myflashobject.swf

Step 5
Save your file

The flash movie should appear with in the slideshow of your presentation.

Important

Please note that the flash file is not 'embedded' into the PowerPoint presentation so to display the complete presentation (in a different location from where it was produced) both the Flash file and PowerPoint files should be stored together.