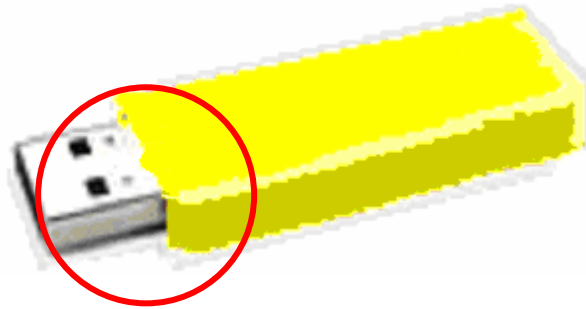


Using a Memory Stick

Step 1

Remove the Cap on your memory stick to expose the USB plug



Step 2

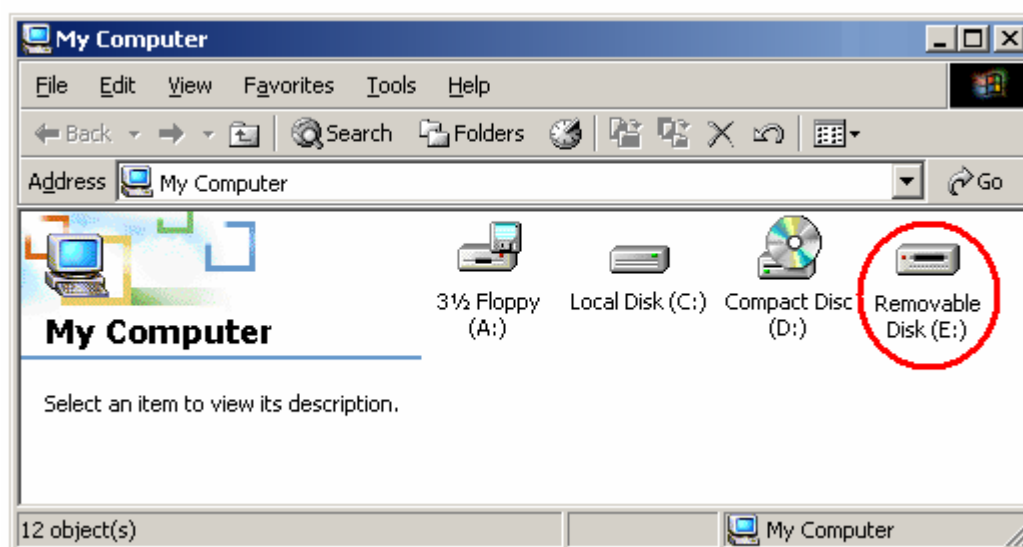
Plug the Memory stick into a USB port on the back of the computer.

Step 3

The first time you use your memory stick “finding new hardware dialog” will appear. This is the computer installing the device. It will disappear when the device is installed.

Step 4


Copy or Save files to the memory stick the same as you would a floppy disk. Navigate towards a “removable disk” drive label.



Removing the Memory Stick

To Remove the Memory stick don't just pull it out. This may damage the data on it.

Step 1

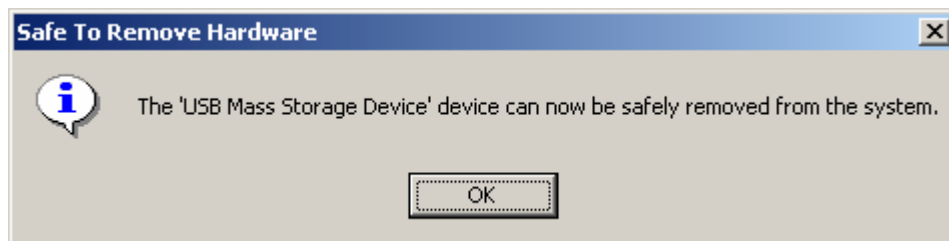
Locate the icon at the bottom right in the corner  of the screen (by the clock).

[Left] Click the icon and Click [Stop USB Mass Storage Device – Drive(Yours)]



Confirmation is provided

Click OK



Now pull the memory stick out of the computer.